



Winter Flower

at Villa Alba

Saturday 18 & Sunday 19 June 2022

An exhibition showcasing floral design, decorative arts, and creative makers. Explore a treasure trove of floral delights inspired by Villa Alba's beautiful interiors.

Villa Alba is a magnificent heritage listed 1880s mansion built in the Italianate style. The unique painted and stencilled interior decoration has inspired a dedicated team to curate *Winter Flower* at Villa Alba.

Built by William Greenlaw and his wife Anna in 1882, the house was decorated over a period of two years by the Patterson Brothers – a Scottish firm who also decorated other significant Melbourne buildings. William Greenlaw declared bankruptcy in 1893 and died in 1895. On her marriage, her family had placed the house in trust for Anna by her family, and she and her children continued to live at Villa Alba until 1897 when she sold the entire contents of the house. The Auction Catalogue describes every item sold. It was a very full house! Anna died in 1918, the house then sold to Samuel Fripp, remaining in his family until purchased by the Women's Hospital in 1949 becoming a home for their trainee nurses. Room and bed numbers remain painted on the doors. To "brighten up the place" for the nurses, many walls were painted over at this time. The house also functioned as a hospital.

The Villa Alba Preservation Committee formed in 1984 as a result of community interest in preserving the property, helping to secure its future as a museum. Since 2004, Villa Alba has been owned and managed by Villa Alba Museum Incorporated. Significant grants enabled the removal of the 1950's wall paint, uncovering and restoring the Vestibule and Boudoir interiors and some of the floral decoration. Recently, the Copland Foundation has supported essential roof repairs. There is so much more to uncover!

Villa Alba is a volunteer run, charitable organisation and we are excited to be collaborating with talented florists, designers, local craftspeople and groups for *Winter Flower*. The exhibition is part of our "Flowers at Villa Alba" program, proudly supported by the City of Boroondara and the Rotary Club of Balwyn.

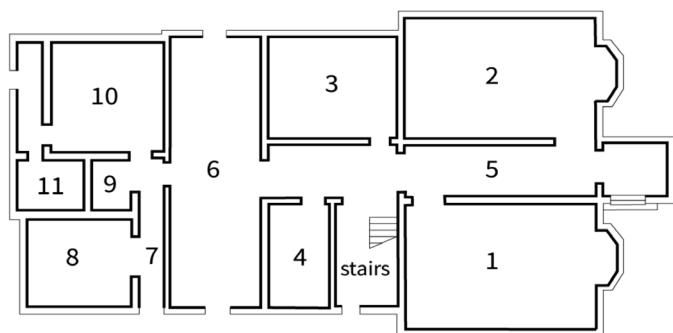
Villa Alba depends on public generosity from entry fees, memberships, donations and grants, to maintain the house and garden and be sustainable as a significant heritage property. To help us 'keep the lights on' and bring Villa Alba to life you can:

- +Spread the word about Villa Alba – Melbourne's unique painted villa
- +Encourage your friends, family and colleagues to visit
- +Become a member
- +Volunteer
- +Book a private tour
- +Book a space for your special event
- +Make a tax-deductible donation

For details see www.villaalbamuseum.org for details.
To donate - visit GiveNow: www.givenow.com.au/villaalbamuseum.

Villa Alba Museum Incorporated acknowledges the Wurundjeri Woi-wurrung people as the Traditional Owners and original custodians of this land, and we pay our respects to their Elders past, present and emerging.

Welcome. We hope you enjoy discovering the many floral delights on show at Winter Flower. This guide includes floor plans, a brief description of each exhibit and contact information. More details can be found in each room.



Villa Alba Ground Floor

Please note:
Rooms 4, 8
& 9 are not
open to the
public.

Toilets are
located in
Room 11,
through the
kitchen

Room 1 *The Dining Room Ikebana*

Dr Shoso Shimbo

The creative team of **Melbourne Ikebana Festival** really appreciate this opportunity to create displays within this most beautiful environment. Personally this was great training toward my **Ikebana Performance** with **Paul Grabowsky** at **Melbourne Recital Centre**, to be held on **11 September 2022**.

For details see: www.ikebanafestival.com

Contact shososhimbo@gmail.com

Advanced Students of **Dr Shoso Shimbo**, Director, from **Tsubo Melbourne**

Contributing to the display are: **Shoka Healey**, **Karen Thode** and **Shoan Lo**.

Please see the room sign for more details on their inspiration and designs.

Room 2 *The Drawing Room Winter Flower Talks & Demonstrations*

If you don't already have a ticket booked please see the Villa Alba volunteers.

All demos/talks run for approximately 1 hour.

Saturday 18 June 11.30am Join **Mel Barkley** from **Violet and the Fox** for a **Victorian Era Posy Making demonstration**.

Discover Victorian era flowers, their meanings and the painted floral decorations within the Museum. **Mel Barkley**, florist and nature lover, is founder of **Violet & The Fox Botanical Studio**, known for its conceptual, naturalistic and creative aesthetic.

Contact mel@violetandthefox.com.au
www.violetandthefox.com.au

Sunday 19 June 11.30am Join **Rita Feldmann** from **Sustainable Floristry Network** for a talk and demonstration about sustainable floristry

Rita started the #nofloralfoam movement in the flower industry @nofloralfoam and discovered that not using foam directed her work to a whole new level of creativity and design. Rita's inspiration comes from nature and landscape. Her unique work and philosophy celebrates the best in season locally, minimising the carbon footprint and chemical load of flowers and foliage.

Contact www.feldmannflowers.com.au

Sunday 19 June 2pm **The Flower in Fashion: Mid century Modern** Join **Nicole Jenkins** from **Circa Vintage** for a colourful look at how we incorporated and interpreted the flower into our dress.

Nicole Jenkins, is a fashion historian, award-winning author of books *Love Vintage*, *Style is Eternal*, collector of Australian fashion and inspired by the why and how Australian's dress.

Contact nicole@circavintage.com.au

In this room: Floral Arrangement by **Amanda Ryan** Villa Alba Volunteer

Studley Quilts **Pat Andrews** 1. *Rose quilt* 2. *William Morris quilt* **Sherrill Lindner** 3. American inspired design

Circa Vintage: Glass case and mannequins – floral themed vintage fashion and accessories.

Room 3 *The Morning Room - Time for Tea*

Shirley Rollings - Afternoon tea set (1950s engagement gift) and matching hand embroidered tablecloth.

Floral themed items (Display cases) and framed photographs (also in the Hall) from the Kew Historical Society Collection.
Curated by **Robert Baker** and **Margaret Robinson**

Villa Alba Shop A collection of Villa Alba and floral themed mementos available for purchase. All proceeds support Villa Alba. Select from: Postcards, Greeting cards, Marmalade, Vases, Tussie Mussies.

Room 5 *The Hall* – Urns by **Lucy Loves Charlie**

Lucy Loves Charlie is an iconic business in the Auburn Village in Hawthorn. They provide beautiful bespoke floral designs to clients for all occasions. "Nature is transient and continuously evolves with its environment through both death and rebirth. At Lucy Loves Charlie we work with nature, echoing its purest form of perfect imperfection. (Also in Room 16) **Contact:** www.lucylovescharlie.com.au

Room 6 *The Vestibule* **Melbourne Polytechnic Floristry Salon**

Melbourne Polytechnic Floristry has been delivering nationally accredited training for over 20 years. The teaching team is highly experienced and passionate, with a strong focus on sustainable floristry practices.

Main stand Bangalow palm spade sculpture.

This Australian native design incorporates locally grown flowers and foliage and features materials foraged from the beautiful heritage-listed gardens at Melbourne Polytechnic's Fairfield campus. **Take a selfie in front of the installation** Tag us @melbournepolytechnicfloristry #melbournepolytechnicfloristry

Student and Teacher Showcase Created by current students from Certificate II Floristry

(Assistant) and Certificate III in Floristry qualification. **Contact** Insta: @melbournepolytechnicfloristry #melbournepolytechnicfloristry FB: Melbourne Polytechnic Floristry Email: horticulture@melbournepolytechnic.edu.au

Room 7 *Flagstone Area & Under the Staircase* **Yarra Edge Nursery Plant Displays**

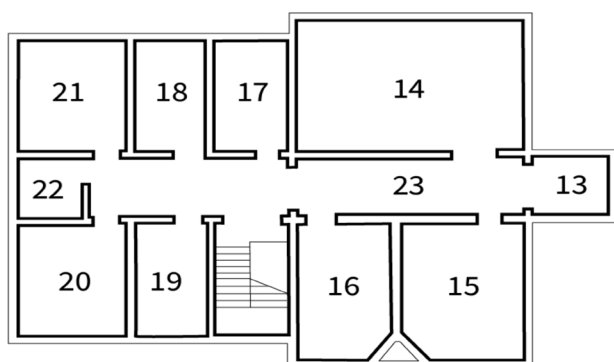
Newly established Yarra Edge Nursery is located at Melbourne Polytechnic's Fairfield Campus. The nursery stocks an extensive range of indoor and outdoor, exotic and Australian native plants.

The **Yarra Edge Nursery** will be hosting their **Grand Opening** on June 23-26 between 9am-4pm.

www.melbournepolytechnic.edu.au/students/key-facilities/shops/yarra-edge-nursery

Contact Instagram: @yarraedgenursery #yarraedgenursery FB Yarra Edge Nursery Ph: 9269 8906 Email: horticulture@melbournepolytechnic.edu.au

Room 10 *The Kitchen* **Jessie's Teapot - Flowers** by **Amanda Ryan** (Villa Alba volunteer)



Villa Alba First Floor

Please note: Rooms 17 & 21 are not open to the public

Upstairs, each main room features a **Jenny Jones Rug** from her **Wildflower Collection**. **Please do not walk on the rugs.** The Artist **Jenny Jones** is an Australian, international award-winning designer. This collection links her love for Australian wildflowers with her passion for design. www.jennyjonesrugs.com

Contact Luke Jones, 620 Church St, Richmond, Ph: 9428 4182, Email: luke@jennyjonesrugs.com

Room 13 *The Tower* “**Almost ready to go out.....**”

Inspired by the idea of a 1950s student nurse being allocated the tower as her bedroom, this playful display creates a floral inspired outfit with matching accessories.

Room 14 *The Master Bedroom* - **Sustainable Floristry** - **Rita Feldmann**

Jenny Jones Carpet Bottlebrush Naturals

Studley Quilters - **Pat Andrew** *Liberty Quilt*. **Annie Andrews** *Spring is here. 2010* Embroidered and pieced. **Annie Andrews** *My embroidered garden. 1995* Embroidered circles and borders.

Rita Feldmann Floral Installation

Rita's designs are inspired by season, working with what's grown locally, commercial varieties, supplementing with materials from her own and other small gardens and loving the challenge of using imperfect products. *Rita says "...doing flowers in heritage listed properties has an added element of having a story and a place in time."* **Contact** www.feldmannflowers.com.au

Room 15 *The Second Bedroom* – **Memento Flores**

Jenny Jones Carpet Everlasting Duckegg

Floral Installation by Memento Flores with huge thanks to **Leigh Clark** from **Florian Florist, Toorak** for materials www.florianflorist.com.au Inspired by Winter, and the sculptural beauty of the surrounding

deciduous trees, this display mirrors the changes in the Villa Alba landscape, through the views from the windows, the colours in this gorgeous room, and the stunning carpet.

Room 16 *The Third Bedroom* Lucy Loves Charlie – Artisan Florist

Jenny Jones Carpet Wattle Carpet

At **Lucy Loves Charlie** we work with nature, echoing its purest form of perfect imperfection. Our florals & foliage exhibition reflects this element of life. From poppies yet to open, to roses soon to die, combined with dried ferns and fresh foliage. www.lucylovescharlie.com.au Email: flowers@lucylovescharlie.com.au

Room 18 *The Fourth Bedroom* – An atelier.....

Jenny Jones Carpet Waratah Carpet

Susan Wright Jones Curator: The Atelier has been set up as an ode to the hidden flowers of Villa Alba, particularly the old fashioned geraniums, with decorative references to many other flowers that adorn the walls and ceilings of the house.

Room 19 *The Fifth Bedroom* – Carpets, quilts and containers.....

Jenny Jones Carpet Australian Banksia in Naturals

Studley Quilters Anne Andrews Baskets on the green. 2005. Appliqué

Mantlepiece: A collection of Victorian era and vintage jugs and vases.

Room 20 *The Boudoir* – Violet and The Fox Botanical Studio

Jenny Jones Carpet Heavenly Cranes Linen

Floral Arrangements by Owner/Founder **Mel Barkley** from **Violet and The Fox**

The Botanical Studio adds a whimsical untamed wildflower aesthetic to all that they do.

Mel's design awe and inspiration comes from Mother Nature; creating unusual combinations of flowers and foliage in natural and uncontrived ways, enjoying using only what's freshest and best.

www.violetandthefox.com.au

Contact mel@violetandthefox.com.au

Room 22 *The Bathroom* Villa Alba Wallpaper Collection

Curated by Susan, Elouise and Claire Wright-Jones Villa Alba has a collection of unseen donated wallpaper sample books. We're delighted to display some of the wonderful wallpaper floral designs popular in days gone by.

Contact villaalbamuseum.org

Mention you've been to *Winter Flower at Villa Alba* across the road at

Studley Grounds Cafe and you can enjoy their **Brunch Deal:** Assorted finger sandwiches, Scone, jam and cream, Espresso coffee or tea \$20pp **NB: Closes at 3pm**

We would like to thank all of our wonderful creatives, exhibitors, and the many people who have helped to make *Winter Flower* special.

We would also like to thank you for visiting and hope you've enjoyed *Winter Flower* at Villa Alba.

Please see our friendly volunteers if you would like to be on our mailing list.

Remember to visit the Villa Alba Shop (Room 3).

There are many ways that you can support Villa Alba. Group tours are available by special arrangement. The heritage house and restored garden provide a beautiful backdrop for a variety of special events such as exhibitions, workshops, concerts, photo shoots,

Contact enquiries@villaalbamuseum.org

www.villaalbamuseum.org

For donations www.givenow.com.au/villaalbamuseum.